



INTRODUCING THE INSTITUTE

**Personnel
and Research Inventory
1981/83**

Institute
for Social
and Economic
Research



University of Manitoba
Faculty of Arts

The Institute for Social and Economic Research at the University of Manitoba currently operates with major funding from Health and Welfare Canada. As an independent research organization, the Institute has the following aims and objectives:

- **Survey Research**
- **Evaluation**
- **Information Management Systems**
- **Public Policy Research**
- **Statistical Methodologies**

**For further information
contact Greg Mason
1-204-474-9422**

PERSONNEL

GREG MASON, B.A., M.A., Ph.D.
Director

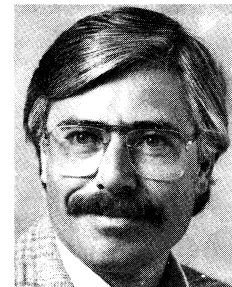
Director of the Institute since its inauguration in 1981, Dr. Mason holds an interdisciplinary degree in Economics, Management Science and City Planning from the University of British Columbia. A member of the Department of Economics at the University Manitoba since 1974, he specializes in policy research in transportation, energy and housing, as well as undertaking and supervising research in information systems and computer methods in social science.



RESEARCH

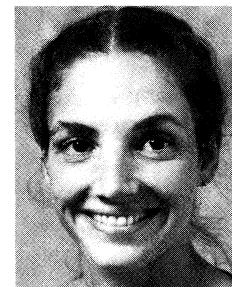
STEPHEN BRICKEY, B.A., M.A., Ph.D.
Senior Research Fellow

A member of the Department of Sociology since 1978, Dr. Brickey specializes in criminological research and survey research methods. On partial leave from the Department to join the Institute staff, Dr. Brickey has undertaken several major contracts for government in victimization and public legal needs.



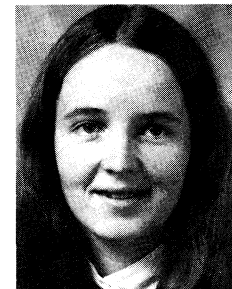
JANE SILVERMAN, B.A., M.A., Ph.D. (Pending)
Research Associate

As a sociologist with an interest in aging and longitudinal data, Ms. Silverman contributes an important dimension in developing research and evaluation in human and social services. She also has extensive private sector experience in survey analysis and polling.



ELISABETH WAELBROECK-ROCHA, B.A., M.A., Ph.D.
Post-Doctoral Fellow

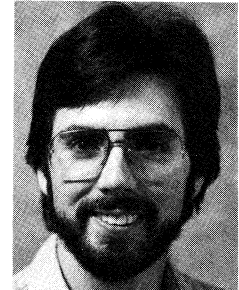
Dr. Waelbroeck-Rocha received post graduate training at the University of Brussels in Econometrics and Mathematical Methods. She has been active in Project Link, a large scale econometric modelling exercise, has prepared economic forecasts for the Economic Intelligence Unit and is undertaking advanced research in regional econometric modelling and leading economic indicators.



TECHNICAL

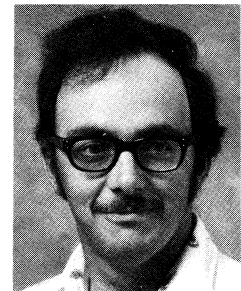
KERRY DANGERFIELD, B.A., M.A. (Pending)
Technical Advisor

Mr. Dangerfield is responsible for coordinating all systems programming and is manager of the Data Archive. Initially trained as a political scientist, he has significant experience in managing large data bases and is primarily responsible for computer advising to clients in the social sciences.



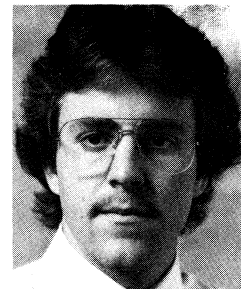
DON SABOURIN, B.Sc., M.Sc.
Statistical Methodologist

As Senior Statistician with the MINCOME Manitoba experiment, Mr. Sabourin brings to the Institute experience and training in statistical analysis, especially as it relates to survey analysis. He is currently involved in data base development for MINCOME, the development of advanced statistical procedures and acts as an advisor for clients on all quantitative matters.



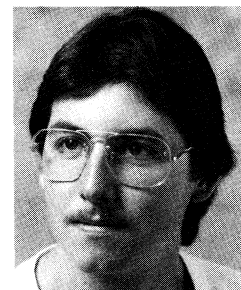
MARK EVANS
Computer Programmer

Mr. Evans is currently enrolled at the University of Manitoba in the Computer Science (Honours) program. He is one of two programmers working for the Institute. His duties include developing programs, the documentation, data base management and software support for the MINCOME data base.



GREG LINDHOLM
Computer Programmer

Mr. Lindholm is currently enrolled at the University of Manitoba in the Computer Science (Honours) program. He is one of two programmers working for the Institute. His duties include developing programs, the documentation, data base management and software support the Computer Assisted Socio-Economic Data Base, and the Census Library.



LOGISTICS

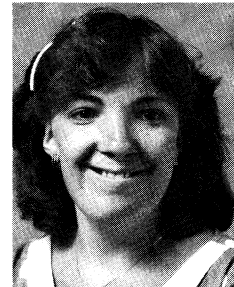
MONIKA OEPKES, B.A. (Hons.), M.A. (Pending)
Assistant to the Director

As Assistant to the Director, Ms. Oepkes is responsible for logistical planning and administration of all research contracts and grants. In addition, she undertakes special assignments in documentation and is Managing Editor of the Western Economic Review.



CATHY WATT
Administrative Secretary

Primarily responsible for the preparation of technical reports, contract and grant specifications and the maintenance of administrative and financial records. Miss Watt provides key support to all Institute activities. She also assists in the production of manuals and other publications of the Institute.



GRACE SCHUSTER
Text Editing

Mrs. Schuster's prime responsibilities are the text editing and production of publications of the Institute. This includes preparation of the Western Economic Review, monographs and occasional publications.



RESEARCH SERVICES

The Institute for Social and Economic Research provides a comprehensive range of services in aid of research in social science, public policy and information system design. Aside from faculty and graduate students at the University of Manitoba, the Institute also serves a growing number of government departments at the federal, provincial and municipal level. Increasingly, private sector clients are using the Institute for advanced training in research methods as well as consultation on the design and execution of research.

Research Design

Comprehensive design services are available for the design of both basic and applied research. These comprise, literature searches, conceptual development and the operationalization of research. Typical design projects have included evaluation procedures for academic units, identification of emerging issues in education, and background papers in transportation, education and legal policy.

Survey Research

Through its Survey Research Division, a complete range of survey research is supported by the Institute. In-person, mail and telephone surveys have all be conducted with high response rates and comprehensive post data collection analyses. Assistance with specific elements of survey research, such as questionnaire design is also available. In the past two years clients have included federal and provincial agencies, non-profit associations as well as researchers at the University of Manitoba. All survey research at the Institute is subject to rigorous ethical and scientific control.

Data Base Management

Through the work on the MINCOME Manitoba data, the Institute has acquired advanced expertise in the development of primary data into research files suitable for secondary analysis. This includes redesign of administrative data and the documentation of machine readable files for wide access.

Computer Programming

Special applications software and documentation services are available. Utilizing the Amdahl 5850 through high speed interactive terminals, the Institute's programming staff are able to develop high level programming support for social science and policy research. A variety of innovative data base maintenance programs have been developed and documented for use on the MINCOME data and for the logistical support of survey research.

EDUCATIONAL SERVICES

A special objective of the Institute is professional education for social scientists with a view to providing the public and private sector research communities with highly trained personnel. In the past, workshops have been conducted in Survey Research Methods and Program Evaluation. In addition, the Institute provides instruction to graduate students in Computer Methods and conducts regular seminars in advanced methodology for faculty of the University of Manitoba.

Women and Work

These are the proceedings of the workshop on methodology for feminist research, especially as it pertains to the participation of women in the economy, which are available from SSHRCC.

Western Economic Review

The regular, quarterly publication of the Institute provides rigorous yet accessible insight into current economic and social policy. Features include economic indicators for provincial economies, background expository articles on economic and social measurement as well as an annual forecast of economic developments in Canada.

MINCOME

The Manitoba Basic Annual Income Experiment (MINCOME) was an ambitious social experiment conducted in Manitoba between 1974 and 1979. Jointly sponsored by the Federal and Provincial governments, the purpose of this program was to evaluate the impact on a wide variety of social outcomes of a guaranteed annual income. Patterned after an experiment in the United States, MINCOME collected very detailed information on the work, education, family composition, the physical and financial assets and socio-psychological attributes of some 1,000 families throughout Manitoba.

Papers are provided in the essential background for researchers who wish to access and understand the Manitoba Basic Annual Income Experiment. Reports on the experimental design, field operations analyses of non-response provide important insights into social experiments in general and the MINCOME project in particular. The Institute has prepared special documentation and technical manuals to assist policy researchers in accessing the data files and to undertake research into income maintenance, welfare administration and social policy for low income households and individuals. The MINCOME longitudinal data base is a unique information system for analysis of decision-making at the micro (household and individual) level.

For the past two years, the Institute has redesigned and developed a series of user-oriented manuals and tape files. These data are now being used across Canada in research ranging from the analysis of income and wealth patterns of low income families, to marital attitudes to labour market behaviour of females headed households. Interested researchers are invited to contact the Director for more details.

RESEARCH PROJECTS UNDERTAKEN/ASSISTED BY THE INSTITUTE FOR SOCIAL AND ECONOMIC RESEARCH

RESEARCH IN ECONOMIC POLICY

CONSERVATION/CONVERSION IN RESIDENTIAL HOME HEATING

Funder: Energy Mines and Resources Canada

Type: Grant

Principal Investigator: G. Mason, Institute for Social and Economic
Research
University of Manitoba

A survey of homeowners and their energy conservation and fuel (home heating) conversion activities was funded by the Department of Energy Mines and Resources Canada. The research had three main objectives--to describe and analyze:

- fuel conversion away from oil to gas, electricity, wood and other substitute energy to measure the degree to which such conversion is related to socioeconomic variables;
- the energy conservation behaviour of homeowners and relate this to the socioeconomic attributes of the household; and
- the attitudes of homeowners to a number of select energy policies enunciated by federal and provincial governments.

Publication: *Energy and the Homeowner (1)*

(1) Publication may be order from the Institute. Please consult price list and order form at the back of this prospectus.

REGIONAL BIAS IN FEDERAL INCOME TAX RATES

Funder: Social Sciences and Humanities Research Council of Canada

Type: Grant

Principal Investigator: J. Dean, Department of Economics
St. John's College, University of Manitoba Campus

This research project will compute regional indexes to adjust the progressive income tax schedule for each region of Canada to reflect cost of living variations. Preliminary estimates, completed for the North West Territories, show quite significant differences in the treatment of taxpayers there as compared to other areas in Canada. The research will prepare estimates of the financial impact of implementing this adjustment procedure for "typical" Canadian households in each province and territory by developing a regional index for adjusting the progressive income tax schedule with a view to reducing the inequity faced by Canadians who live in high cost regions of the country.

Publication: Pending

ECONOMIC ANALYSIS OF THE STRUCTURE OF CANADIAN WAGES

Funder: Social Sciences and Humanities Research Council of Canada

Type: Grant

Principal Investigator: W. Simpson, Department of Economics
University of Manitoba

This research uses a unique survey of Canadian establishments. The Labour Canada Survey and Wages and Working Conditions, to analyze the size and structure of Canadian wage differentials with respect to such relevant factors as occupation, union status, sex, industrial characteristics, establishment size, geographical location and local labour market conditions.

Published data on industrial characteristics and local labour market conditions will be merged with the Labour Canada Survey to investigate the role of these factors in wage determination. The surveys for 1975 and 1978 will also be examined and the feasibility of linking the annual surveys to form panel data will be assessed. Data on fringe benefits and working conditions available will be included to assess the impact of these factors on wage determination. The process of determination of the size and structure of wage differentials will be investigated using the hedonic price approach.

The study assesses the policy implications of this research, including the regional income disparities, sex discrimination, small business assistance, and the role of wage structure in general and market power in particular in the inflationary experience of the 1970s.

Publication: Pending

- (1) Publication may be order from the Institute. Please consult price list and order form at the back of this prospectus.

RAIL/ROAD DIVERSION IN MANITOBA: A SURVEY OF METHODOLOGY AND PRELIMINARY ESTIMATE OF FISCAL INCIDENCE

Funder: Economic Council of Canada

Type: Contract

Principal Investigator: G. Mason, Institute for Social and Economic
Research
University of Manitoba

Over the next several decades, the trend for freight to be moved on the road network, as opposed to rail movements, will likely accelerate in western Canada. There has been a shift from rail to truck modes of freight shipment on the Prairies. This study is a preliminary investigation of the fiscal incidence surrounding the diversion of rail traffic to roads, through preliminary methodological survey, designed to specify how one would proceed to estimate the fiscal incidence of rail/road freight diversion. Estimates, based upon existing knowledge (technical and economic) and data are provided as a crude indicator of the likely transfer under alternate scenarios of branch line maintenance.

Publication: Available from the Economic Council of Canada

LONG RANGE PLANNING AND DEVELOPMENT IN WINNIPEG

Funder: Winnipeg Business Development Corporation

Type: Grant

Principal Investigator: G. Mason, Institute for Social and Economic
Research
University of Manitoba

This report summarizes recent data collection and analyses efforts undertaken for the City of Winnipeg in the last 10 years. In particular, the Winnipeg Development Plan Review (WDPR) is studied in some detail. Also, population data and forecasts are studied; information on employment and labour markets is analyzed; the general price index and housing prices are considered; data relating to business development and a review of analytical techniques used to study urban economics. Data sources currently available for long term economic planning are appraised and some explicit proposals for developing on-going monitoring of the urban economy are presented.

Publication: *Data Sources for Long Range Planning and
Development in Winnipeg*

SURVEY OF SELECTED MANUFACTURING FIRMS IN MANITOBA

Funder: G & B Research Associates

Type: Grant

Principal Investigator: G. Mason, Institute for Social and Economic
Research
University of Manitoba

A survey of selected manufacturing firms in the clothing and transportation field was conducted to establish the application of technology and survival in the current economy.

This research was a part of an overall study on manufacturing firms in Manitoba, funded by the Economic Council of Canada

Publication: Available From the Economic Council of Canada

RESEARCH IN CRIMINOLOGY

THE STATE OF LEGAL INFORMATION OF THE MANITOBA POPULATION

Funder: Department of Justice Canada

Type: Contract

Principal Investigators: D. Bracken, S. Brickey,
Department of Sociology,
University of Manitoba

This major research project was conducted in Manitoba to assess citizens knowledge of the law and their access to the law. The information this research would provide includes perceptions of problems as legal problems; types of legal problems unique to particular groups; willingness to utilize the law; knowledge of basic legal information; access to legal information and legal services; and types of contact with legal services. The project also assesses the extent to which these factors are related to major socio-economic indicators, demographic variables and factors such as place of domicile (i.e., rural versus urban dwellers), occupation, education, ethnicity, and race. By implication, this research also indicates the extent to which ameliorative programs need to be established to increase knowledge and access to the law, and provide important insights into designing these programs.

Publication: Available from the Department of Justice

WHAT WORKS IN CRIME PREVENTION? A SURVEY OF THE LITERATURE

Funder: Solicitor General Canada

Type: Contract

Principal Investigator: R. Linden, Department of Sociology
University of Manitoba

In recent years, a number of factors have led to a concern with crime prevention. There has been a proliferation of crime prevention programs during the past five years. Evaluations of these programs are rarely published and no systematic surveys of the results are available.

The survey of the literature involves published and unpublished material dealing with evaluations of crime prevention programs. Characteristics of successful and unsuccessful programs identified and analysis is guided by models of crime prevention planning taught at the Canadian Police College.

Publication: Available From the Solicitor General Canada

WINNIPEG VICTIM/WITNESS ASSISTANCE ASSESSMENT

Funder: Solicitor General Canada

Type: Contract

Principal Investigator: S. Brickey, Department of Sociology
University of Manitoba

This project collected various kinds of information to be used in the planning and implementation of new services to assist victims and witnesses of crime in Winnipeg. An inventory was constructed of all agencies which provide victim/witness assistance; a description of the services and summary statistics of case loads; an annotated bibliography; and a survey of victims/witnesses which examines the support received by victims from various sources, assesses the criminal justice system needs for victim/witness programs and assesses the perceived needs of victim/witnesses who have had contact with the criminal justice system. The analysis undertaken consisted primarily of the description of the results of the survey and interviews.

Publication: Available From the Solicitor General Canada

VICTIM/WITNESS ASSISTANCE PROGRAM

Funder: Supply and Services Canada

Type: Contract

Principal Investigator: S. Brickey, Department of Sociology
University of Manitoba

The research examined the consequences of crimes to the victims and evaluated the ability of the victim/witness programs to meet a range of needs encountered by victims and witnesses.

Publication: Pending

RESEARCH IN INFORMATION MANAGEMENT SYSTEMS

MINCOME — TIER II CODEBOOK

Funder: Health and Welfare Canada

Type: Contract

Principal Investigator: G. Mason, Institute for Social and Economic
Research
University of Manitoba

A codebook for the Tier II level of the MINCOME data base has been prepared, including a survey by survey inventory of all variables: unique question number/unique response number; question text; response pattern; and summary statistics; and a final subject index which provides the question text/positions in the experiment; response options; and a discussion of the construction of certain main variables, where warranted.

Publications: *MINCOME Subject Catalogue*
MINCOME Surveys Catalogue

MINCOME — TIER II DATA BASE MANAGEMENT SYSTEM

Funder: Health and Welfare Canada

Type: Contract

Principal Investigator: G. Mason, Institute for Social and Economic
Research
University of Manitoba
D. Scuse, Computer Science
University of Manitoba

The Data Base Management System, Tier II, evaluates the various Data Base Management Systems, documents extract procedures for the general researcher, provides interfaces between the chosen DBMS and standard statistical software packages such as SAS or SPSS, and produced a longitudinally linked version of the data base from a significant number of variables.

Publication: For Internal Use Only

MINCOME: TIER III CATALOGUE AND CLASSIFICATION

Funder: Health and Welfare Canada

Type: Contract

Principal Investigator: M. Oepkes, Institute for Social and Economic
Research
University of Manitoba

This project undertook the sorting, classifying, indexing and storing of the Tier III MINCOME material of administrative records; research design; field operations; research reports and analyses; survey instruments; research management; data processing management, and payments management. A computerized inventory complete with appropriate subject and chronological tags of the material was also prepared.

Publication: For Internal Use Only

LONGITUDINAL DATA BASE CONSISTENCY — MINCOME

Funder: Health and Welfare Canada

Type: Contract

Principal Investigator: G. Mason, Institute for Social and Economic
Research
University of Manitoba

This project outlines a program of longitudinal consistency evaluation and error checking as well as the creation of a number of longitudinal summary tapes. This produced a progressively more correct data base as the data are exploited for their longitudinal potential.

Publications: Various Machine Readable Files for Internal Use

CENSUS TAPE LIBRARY AND USER DOCUMENTATION

Funder: Academic Development Fund Committee, University of Manitoba
Type: Grant

Principal Investigator: G. Mason, Institute for Social and Economic
Research
University of Manitoba

This project is a continuation of a program to assemble and document Census Canada computer tapes for the 1971, 1976 and 1981 census years. In addition, special tapes are acquired to perform geo-coding for Manitoba as well to link the data across census periods. Comprehensive documentation was developed and user seminars presented the system to researchers and teachers.

Publication: User Support Documents for University of Manitoba Computer Users

LONGITUDINAL SUMMARY TAPES MINCOME

Funder: Health and Welfare Canada

Type: Contract

Principal Investigators: G. Mason, Institute for Social and Economic
Research
University of Manitoba
D. Sabourin, Health and Welfare Canada

This project defines and develops three longitudinal summary tapes of the MINCOME Manitoba surveys (Tier II) data comprising: labour market histories; income and net worth; and family composition and attitudes. It also develops and refines an error detection and correction procedure for the Tier II data base.

Publications: Pending

RESEARCH IN SOCIAL ASSISTANCE

A SIMULATION OF VARIATION IN THE WORK INCENTIVE PLAN OF MANITOBA SOCIAL ASSISTANCE

Funder: Manitoba Task Force on Social Assistance

Type: Contract

Principal Investigator: W. Simpson, Department of Economics
University of Manitoba

This research project produced an informal simulation of the potential benefits which might be realized by altering the "taxation rates" applied to work income. Estimates are provided for the expected work incentive effect, change in total costs of social assistance and change in program delivery cost of social assistance under a number of variations to the level and structure of these taxation rates.

An assessment is made of the extent to which the various work incentives programs evaluated may conflict potentially with other social assistance initiatives, especially "in-kind transfers".

Publication: Available from the Manitoba Government

ADMINISTRATIVE ISSUES IN SOCIAL ASSISTANCE DELIVERY

Funder: Manitoba Task Force on Social Assistance

Type: Contract

Principal Investigator: D. Hum, Department of Economics
University of Manitoba

Manitoba recently appointed a task force to review social assistance. Both the public and the policy makers are often disenchanted with the provincial welfare system. The programs may exclude groups or be administered in a costly way. Solutions to the alleged "welfarelessness" cannot be proposed in isolation of policies which address the question of work incentives. However, a feasible policy for reform which considers welfare and work incentives together raises many issues. This study determined a variety of alternative procedures for social assistance delivery.

Publication: Available from the Manitoba Government

RESEARCH IN EDUCATION POLICY

FRENCH IMMERSION: RECRUITMENT FACTORS

Funder: Social Sciences and Humanities Research Council of Canada
Type: Grant
Principal Investigator: R.M. Bienvenue, Department of Sociology
University of Manitoba

The purpose of this research was to identify the social and psychological factors which influence the placement of children in elementary French Immersion programs. The survey compared French Immersion parents with their counterparts in the regular English program. The data collected includes information on family characteristics, socio-economic status, ethnicity and language, ethnolinguistic attitudes and parental assessments of Immersion and Core French Programs. The findings highlight a number of issues associated with the differential placement of children in elementary school programs.

Publication: *French Immersion Factors in Elementary School Programs*

CHALLENGE TO EDUCATION

Funder: Department of Education, Government of Manitoba
Type: Contract
Principal Investigator: G. Mason, Institute for Social and Economic
Research
University of Manitoba

This research produced an analysis of major factors which are likely to have an important influence on public and post-secondary education in Manitoba over the next 3 to 5 years.

Publication: *Challenge to Education in Manitoba*

RESEARCH IN THIRD-WORLD COUNTRIES

LAND, LABOUR, AND SOCIAL STRUCTURE: CHANGE IN RURAL MEXICO

Funder: Social Sciences and Humanities Research Council of Canada

Type: Grant

Principal Investigator: R. Wiest, Department of Anthropology
University of Manitoba

This research deals with the political economy of a small city in Michoacan, Mexico. The thrust of the research is to document the allocation and use of land and labour as this community articulates with the global economy. Earlier research, principally agricultural production, domestic group organization and migrant labour, will be used and broaden the inquiry to treat regional development issues, social class structure, and the history of production in the immediate region.

Publication: Pending

RIVERBANK EROSION IMPACT STUDY

Funder: International Development and Research Centre (IDRC)

Type: Grant

Principal Investigator: J. Rogge, Department of Geography
University of Manitoba in conjunction with the
Department of Geography
Jahangirnagar University, Dhaka, Bangladesh

The problems of river channel migration, rural population displacement and land reallocation in Bangladesh are analyzed. The annual phenomena of Monsoon rains cause major rivers to flood much of the land. As a consequence of this flooding, resulting in shifts in river courses and bank erosion, the dislocating impact upon the rural peasant population and costs of lands lost are enormous. The objective of this research program is to generate cooperative research between physical and social scientists. Specifically, it will:

- evaluate the long term trends of river channel migration, with a view to developing some forecasting techniques and models which will be of utility to rural planners; and
- to assess the socio-economic and demographic impacts of the annual involuntary migration and develop some policy planning guidelines and strategies to reduce the dislocating effects and, in so doing, contribute to national rural development processes.

RESEARCH IN HEALTH

TIME TO QUIT

Funder: Manitoba Heart Foundation

Type: Grant

Principal Investigator: A. Segall, Department of Sociology,
University of Manitoba

This research evaluate the effectiveness of a mass media campaign designed to modify smoking behaviour. Health care workers were chosen as the sample for this project because of the role they play as models of health behaviour. A self-administered questionnaire was used to collect demographic data, smoking history information, quitting attempts and Time to Quit--the TV program--exposure. These data evaluate the rate of smoking cessation among health care workers in general hospitals in three Manitoba settings: Killarney, Portage la Prairie and Selkirk.

Publication: Pending

WINNIPEG AREA STUDY

Funder: Social Sciences and Humanities Research Council of Canada

Type: Grant

Principal Investigators: R. Currie, A. Segall, Department of Sociology
University of Manitoba

The research is a follow-up study to the 1981 Winnipeg Area Study. It focuses on a comparative analysis of professional and folk health beliefs and healing practices. The research assesses whether traditional, non-scientific (folk) and modern, scientific (professional) beliefs and healing practices co-exist in the same social context.

Publication: Various Working Papers

PUBLIC BELIEFS AND ATTITUDES ABOUT CARDIOVASCULAR HEALTH

Funder: Manitoba Heart Foundation

Type: Grant

Principal Investigator: A. Segall, Department of Sociology
University of Manitoba
W. Tweed, Department of Anaesthesia
University of Manitoba

The provincial survey of cardiovascular health beliefs and behaviour among Manitobans was designed to provide base line data for long term planning and the development of health education programs. The objectives of the research are to learn more about: public beliefs and knowledge of the causation and treatment of heart disease; public responsibility for prevention and emergency responses; and public perception of the credibility of various sources of health information.

In addition, the study also intends to test the utility of the Health Belief Model in predicting asymptomatic preventive health behaviour regarding cardiovascular risk factors.

AN INTERVENTION FOR WOMEN WHO WERE SEXUALLY VICTIMIZED IN CHILDHOOD OR ADOLESCENCE

Funder: Health and Welfare Canada

Type: Grant

Principal Investigator: Dr. Jehu, Psychological Service Centre
University of Manitoba

This program will further develop and evaluate over a 3 year period a treatment program for women who are associated with having been sexually abused in childhood or adolescence. It is estimated that at least 6,000 women in the City of Winnipeg are suffering from a range of interrelated emotional, interpersonal, and sexual problems. The program will offer an interpersonal skills training components to those who might benefit from it.

RESEARCH IN HISTORICAL ARCHAEOLOGY

UPPER FORT GARRY PROJECT

Funder: University of Manitoba/Social Sciences and Humanities
Research Council

Type: Grant

Principal Investigator: G. Monks, Department of Anthropology
University of Manitoba

The Upper Fort Garry Project, begun in 1981, aims to expose the southwestern portion of Upper Fort Garry that presently lies buried beneath Bonnycastle Park. The purpose of the excavation is to obtain structural, artifact, and spatial information on the remains of the fort. The archaeological record produced by this project will complement and expand the extant historical record on the Red River-Assiniboine River junction.

RESEARCH IN WOMEN'S STUDIES

ANNOTATED BIBLIOGRAPHY: HISTORY OF WOMEN IN MANITOBA

Funder: Social Sciences and Humanities Research Council of Canada

Type: Grant

Principal Investigator: M. Kinnear, Department of History
University of Manitoba

The bibliography is a catalogue of archival sources needed for the history of women in Manitoba. The project results in the identification and summary description of archival materials relevant for the writing of women's history in Manitoba. The bibliography is for use for researchers into social history in general and women's history in particular.

Publication: Pending

DATA REQUIREMENT TO SUPPORT RESEARCH INTO WOMEN AND THE CANADIAN ECONOMY CONFERENCE

Funder: Social Sciences and Humanities Research Council of Canada

Type: Grant

Principal Investigators: G. Mason, Institute for Social and Economic
Research
University of Manitoba
E.M. Kinnear, Department of History
University of Manitoba

In December 1982, the Institute for Social and Economic Research convened a conference on the general theme of data and methodology required to support research into women and the Canadian economy. This was one of several regional conferences designed to assist the Council in planning a new strategic theme on Women and Work.

Of special concern was the role of quantitative and qualitative data and the role of central public sector agencies in defining research by the nature of the data which are produced. The conference participants explored the problems of data, its definition and handling, especially with respect to policy oriented research.

Publication: *Women and Work Available from Social Science and
Humanities Research Council of Canada*